

Predict, plan and control air traffic smarter

Increase efficiency and reduce workload with **Insero RADIS**

Keeping situational awareness is crucial for air traffic controllers in order to ensure safety in air traffic management. With our workflow-oriented real-time radar display, we provide air traffic controllers with immediate overview of air traffic and help detect possible flight safety issues in time.

Instead of accessing data in several systems, Insero RADIS enables air traffic controllers to access all information in one display. Consequently, Insero RADIS increases efficiency and cut workload by enabling integration with many different components such as: flight data process systems, electronic flight strips, air- and ground surveillance as well as meteorological information.

Make decisions – faster and more efficient

Efficient decision-making enables you to accelerate business excellence and act in time. With Insero RADIS, we provide you with excessive situational awareness and draws attention to matters that need immediate attention.

By gathering data from any available source such as secondary and primary radar tracks, multi radar tracker data, ADS-B and weather data, Insero RADIS enables a unified operational picture and presents information in a single display.

Automatic management

The radar display system correlates the flight plans from a flight data processing system with corresponding tracks and creates a generic track. Furthermore, it is designed for simultaneously recording and replay of track data.

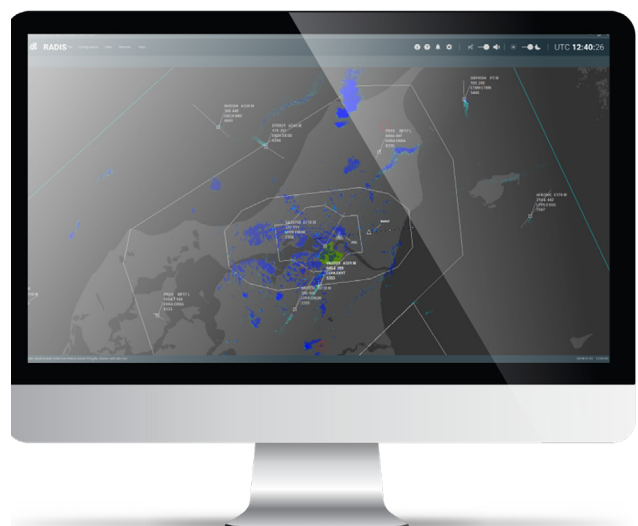
The solution supports the common On-Line Data Interchange (OLDI) coordination electronically and has a built-in Safety Nets Module.

Highly flexible

Insero RADIS can be configured to operate on a diversity of radar data sources. These include, but are not limited to the well-established ASTERIX protocols, Thales A500, VDL Mode 4, NMEA, SBS and various GPS-protocols.

Cost-efficient radar workstation

The radar display is based on standard PC-hardware which makes it an advanced, flexible and very cost-efficient radar workstation concept which integrates many critical aspects of air traffic control.



Predict, plan and control air traffic smarter

**For more information
please contact:**

Insero Air Traffic Solutions

W: www.inseroATS.com

E: inseroATS@insero.com

T: +45 79 25 33 00



Key features

Track and Flight Plan correlation

Choose either automatic or manual association.

Safety Nets module

Support for Safety Nets (e.g. STCA and MSAW) alerts and output in ASTERIX CAT004 format.

User interface

User interface with recent EUROCONTROL recommendations for HMI-principles.

Standard map formats

The radar display supports all the most common map formats and has a built-in MAP Editor tool.

Automatic management

Automatic management and correlation of flight plan information.

On-Line Data Interchange

On-Line Data Interchange (OLDI) support for notification, coordination and transfer of flights.

Build-in recorder/replay

Build-in recorder/replay feature for documentation and incident investigation.

Strip print

Support for strip print through track label.