

# AIMS

## AIRPORT INFORMATION MANAGEMENT SYSTEM

AIMS is an easy-to-use FPL and MET display for presenting data from the AFTN network.

Using data from the AFTN network through the national AFTN service provider, AIMS provides the user with relevant, sorted data, giving a clear view of the received information.

The system can be configured with several different user interfaces, suitable for e.g. tower-, approach- and briefing position for pilots/squadrans.

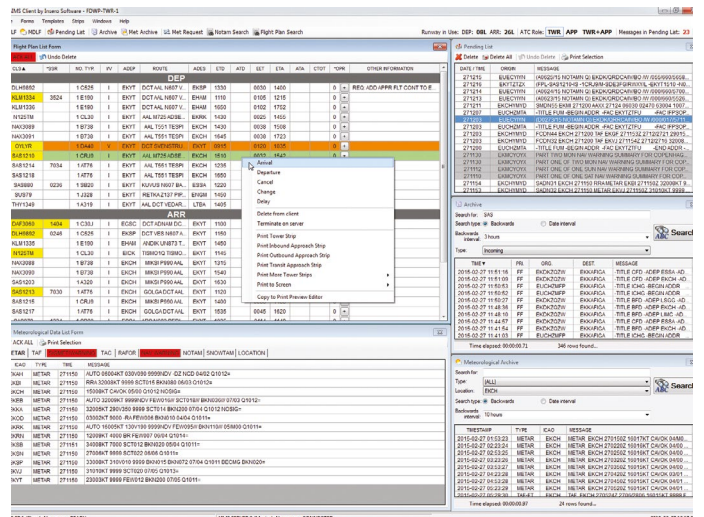
The user is able to easily change the sorting parameters, having the information displayed suitable to the work position.

The system is based on moveable windows that enable the user to set-up the screen as desired.

Flight plans can easily be created, delayed, and changed on-line using an existing FPL or one of the many forms or user created templates.

Meteorological data like METAR, TAF, SIGMET etc. are presented in an easy adoptable way together NOTAM and SNOWTAM data.

As an option, the system can be delivered with strip print functionality and a strip printer to print paper strips automatically from the received flight plans, from strip templates and from the manually filled strips. The strips are designed in the included strip drawing tool where flight data, lines, arrows and symbols are easily placed.



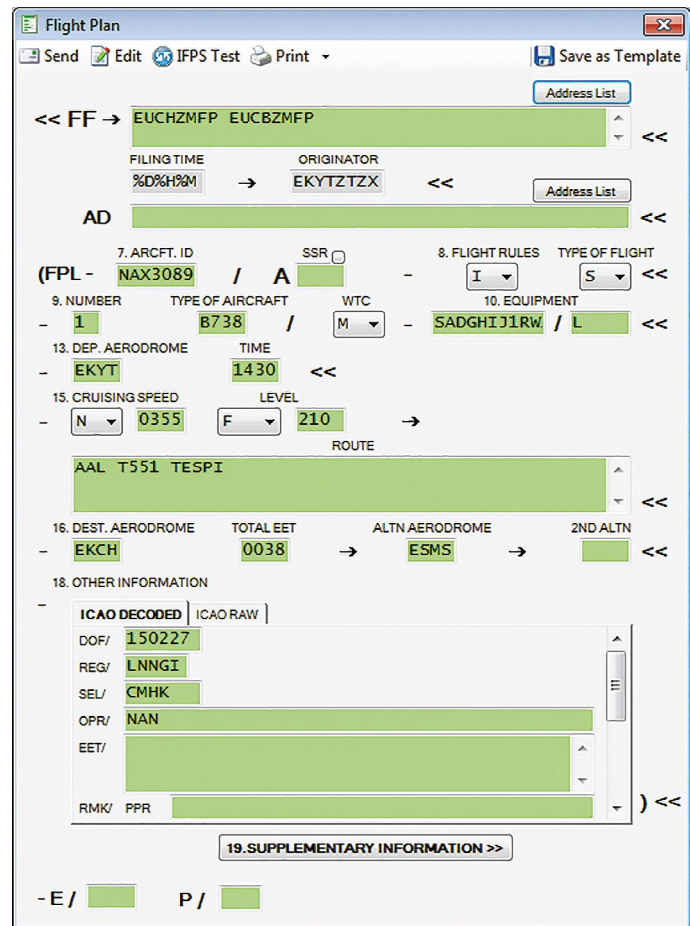
### CUSTOMER BENEFITS

- Configurable roles – e.g. tower, approach or pilot/squadrons
- Configurable flight plan list form – online customization the message lists for each work position
- All new flight plans are clearly marked with user defined colors/animation
- Message pending list
- Relevant sorting of messages
- Flight plan forms for filing or editing
- Address list for easy access to frequently used AFTN addresses
- Intelligent forms for messages, e.g. arrival, diversion, departure, cancellation, change, delay etc.
- Editor for “freehand” messages
- “Local flight plan” feature for internal flight plan handling and strip printing
- Archive function – search for previous messages days, months or years ago
- Meteorological archive function – search for previous weather messages
- Meteorological data list form
- Meteorological request function

AIMS can be set up to a single user installation as well as a multi-user client/server installation with the distributed system containing various clients running on distinct PC connected by a redundant with redundant servers.

Each client is running independently, but communicates with the other clients via the server, yielding a flexible and scalable system concept.

All system components operate very smoothly on a standard PC running Microsoft Windows with off-the shelves network hardware, thus substantially reducing the cost of acquiring and maintaining system hardware.



### SYSTEM TECHNOLOGY

AIMS is based on a client/server system concept consisting of a server cooperating with a number of clients, each constituting a display position of the system.

“Dynamic customer designed strip”

V	DAF275	EKSP	DCT	EKSP	1547						0700-07
										0200	
											↑↓
											1 961/M 100

### FURTHER INFORMATION

For further information or demonstration of AIMS, please contact our sales department.

### INSERO SOFTWARE

Chr. M. Østergaards Vej 4A | DK-8700 Horsens  
 Tel: +45 7925 3300 | Fax: +45 7925 3313  
 isw\_info@inero.com | www.inerosoftware.com



### KIM FOGED

Head of ATM, Inero Software  
 kf@inero.com  
 +45 20 98 99 56

“INNOVATION IS THE ESSENCE  
 DEDICATION MAKES THE DIFFERENCE”